

# Molalla River Watch

## 2019 Annual Report



### From the Executive Director

Dear Friends,

I hope all of you are finding creative ways to avoid “cabin fever”. Now, I have more time to reflect on 2019. With your help, Molalla River Watch was able to fulfill our mission to promote respect & understanding of the Molalla River Watershed through education & conservation for present & future generations.

New 2019 milestones included the Molalla River getting National Wild & Scenic River designation & we got a new office space. Our regular yearly accomplishments included our 27th annual spring & fall river cleanups & hands-on education with Molalla R High School Environmental Science students. We worked towards restoring important floodplain habitat at the bottom of our watershed at Molalla R State Park. Also, our new partnership with Molalla R Academy allowed us to emphasize the importance of local freshwater conservation to students.

We appreciate all of our supporters and partners. I look forward to meeting more of you. Please join us by volunteering, donating, & signing up for our newsletter!

Sincerely,

A handwritten signature in black ink that reads "Asako Yamamuro".

Asako Yamamuro  
Executive Director

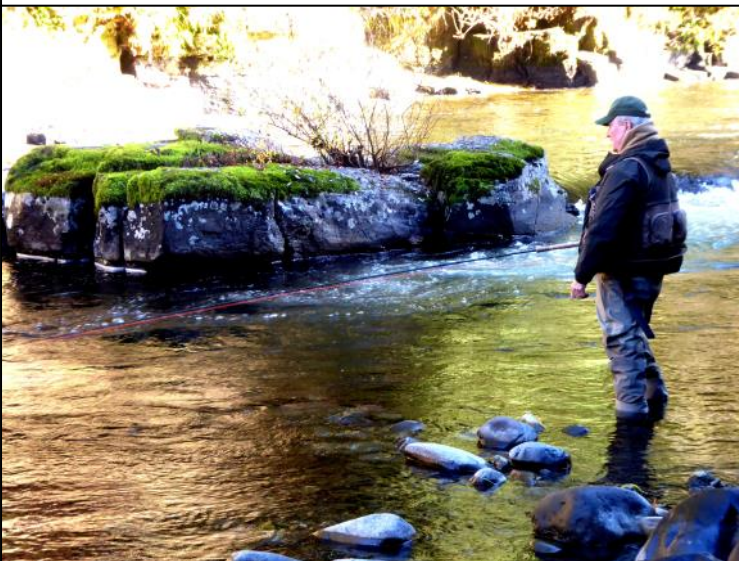
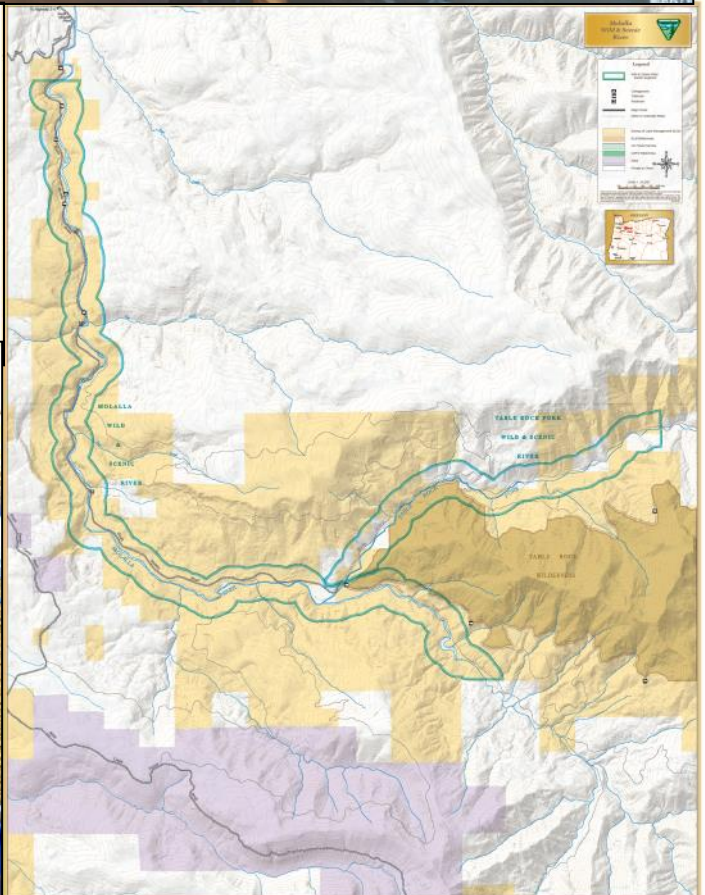


# Molalla River: Now a National Wild & Scenic River!

Many partnerships & years of effort have paid off. On March 12, 2019, the upper 15.1 miles of the Molalla River & a 6.2 mile segment of the Table Rock Fork were officially designated as recreational under the National Wild & Scenic River System. The new designation offers more protection for the Molalla River that supplies drinking water to the cities of Molalla & Canby, provides recreational opportunities, & serves as vital habitat for fish & wildlife.



**Above:** Bill Taylor (middle), Molalla River Watch's board chair, talks to guests at the Molalla Wild & Scenic Celebration. **Right:** BLM map of the Wild & Scenic designated areas in blue outline on the Molalla R & Table Rock Fork. **Below:** Our partners at Molalla River Alliance (MRA) played an integral role in getting Molalla designated. MRA's chair, John Atkins, fishing.





## Education



Molalla River High School Environmental Science students got to learn hands-on about forest ecology, native plants, & aquatic insects & beavers at Aquila Vista.



Molalla River Academy students learned about salmon migration back to rivers & why freshwater is so important to conserve. We discussed things taken for granted like flushing toilets!



## Outreach



Welcome to our new Molalla River Watch office! 108 Engle Ave in Molalla.



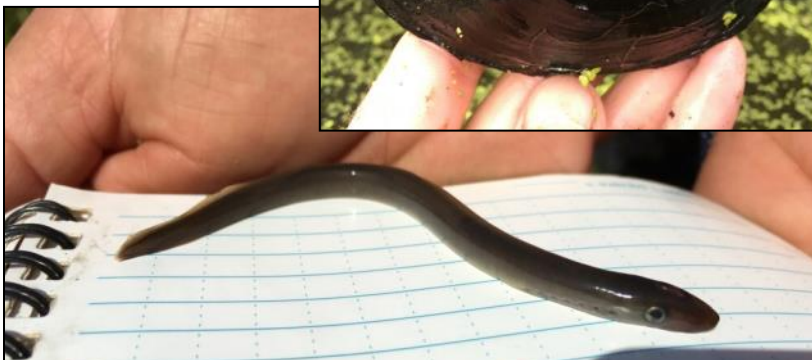
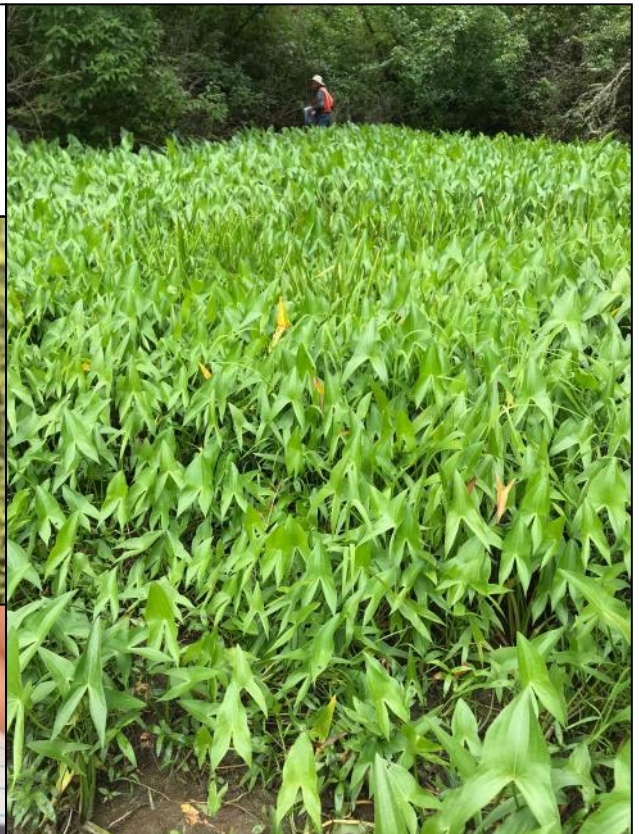
Now, we have a home base to be more available as a resource center for landowners, have meetings with locals & partners, & have more of a presence with the community (like meeting families while passing out candy on Halloween 🎃).

# Restoration: Molalla River State Park

Collaborating with Oregon Parks & Rec. Dept. to restore floodplain habitat at Molalla River State Park is Molalla River Watch's largest project to date. Funding support from Oregon Watershed Enhancement Board, Bonneville Power Administration, & Willamette Water Supply Program has allowed for many accomplishments:

- ♦ Treating an extensive invasive knotweed monoculture. In it's place we will work to restore a healthier & diverse native floodplain forest.
- ♦ Better understanding the complexity of water temperature, water levels, & restoration potential at the confluence of the Molalla, Pudding, & Willamette Rivers. The State Park has approximately 450 acres of floodplain habitat.
- ♦ Surveying for salmon, lamprey, freshwater mussels, & great blue heron. We plan on restoring natural floodplain functions to increase available habitats.

Found at Molalla R State Park. **RIGHT:** Healthy patch of wapato, an important wetland plant. Indigenous groups eat their tuberous roots. **MIDDLE:** Freshwater mussel, *Anodonta species*. **BOTTOM:** Pacific lamprey juvenile.





## Molalla River Cleanups: Our 27th Year!



**122 volunteers** picked up **1,600 lbs.** of trash & **40 lbs** of recyclable glass!  
**Trash to Art** participants used trash collected to create art pieces.

## Amphibian Egg Mass Surveys: Our 5th Year!



**270** northern red-legged frog, **2** northwestern salamander, & **61** chorus frog egg masses, plus **28** adult rough skinned newts surveyed by volunteers in Aquila Vista pond, located in the Molalla Recreation Corridor.



# Molalla River Watershed Facts



The Molalla River is the Willamette River's **longest undammed tributary**.

Molalla's **spring Chinook salmon & winter steelhead** populations are listed as **threatened** on the Endangered Species Act.



Molalla River is the **drinking water source** for Molalla & Canby.

The upper section of the Molalla River is designated **State Scenic Waterway & National Wild & Scenic River**.



## Make a Difference in the Molalla River Watershed

Amazing volunteers helped us pick up trash, plant trees, pull weeds, maintain trails, cook for fellow volunteers, & mail out newsletters.

Please contact [molallariverwatch@gmail.com](mailto:molallariverwatch@gmail.com) to:

- **Volunteer with us.**
- **Make a donation.**
- **Join our mailing list.**

